

U-PROX KEYFOB modification 2

www.u-prox.systems support@u-prox.systems www.u-prox.systems/doc_keyfob2

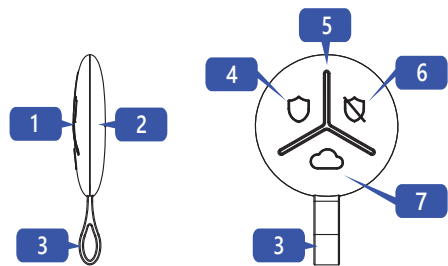


EN WIRELESS KEY FOB IN A NON-SEPARABLE CASE

Is a part of the U-Prox security alarm system

User manual

Manufacturer: Integrated Technical Vision Ltd.
Vasyl Lypkivsky str. 1, 03035, Kyiv, Ukraine



WARNING

Keep out of reach of children

Contains button cell battery. Hazardous, if swallowed, may lead to severe or fatal injury within 2 hours or less.

If battery is swallowed, immediately seek emergency medical attention.

U-Prox Keyfob - is a wireless key fob designed to control the U-Prox security system. The modification has non-separable case due to safety requirements for Australian and New Zealand regions. It has two buttons for arming and disarming, one soft key, and a LED indicator for interaction with the user of the alarm system. Can be used as a panic button.

EN

The device is registered for the user of the control panel and is configured with the U-Prox Installer mobile application.



Functional parts of the device (see picture)

- 1. Top case cover
- 2. Bottom case cover
- 3. Fastening strap
- 4. "Arming" button
- 5. LED indicator
- 6. "Disarming" button
- 7. Programmable button

TECHNICAL SPECIFICATIONS

Partitions	1
Power	3V, CR2032 lithium battery included
Service life of battery	up to 5 years
Radio frequency	ISM-band wireless interface with several channels
	ITU region 1 (EU, UA): 868.0 to 868.6 MHz, bandwidth 100kHz, 10 mW max., up to 100m (in line of sight);
	ITU region 3 (AU): 916.5 to 917 MHz, bandwidth 100kHz, 10 mW max., up to 100m (in line of sight).
Communication	Secure two way communication, sabotage detection, key - 256 bits
Operating temperature range	-10°C to +55°C
Dimensions & weight	Ø 39 x 9 x 57 mm & 15 grams
Case colour	white, black

COMPLETE SET

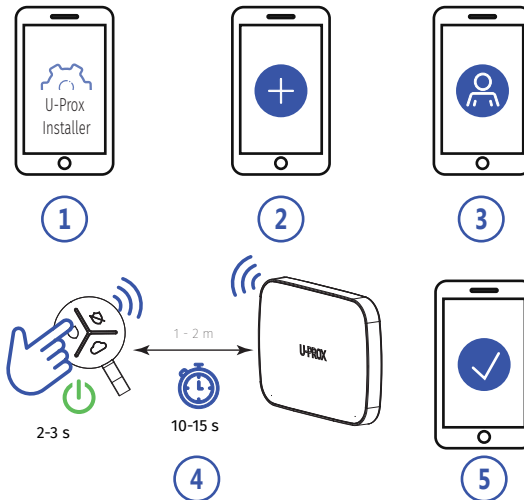
1. U-Prox Keyfob; 2. CR2032 battery (pre-installed); 3. Quick start guide

WARRANTY

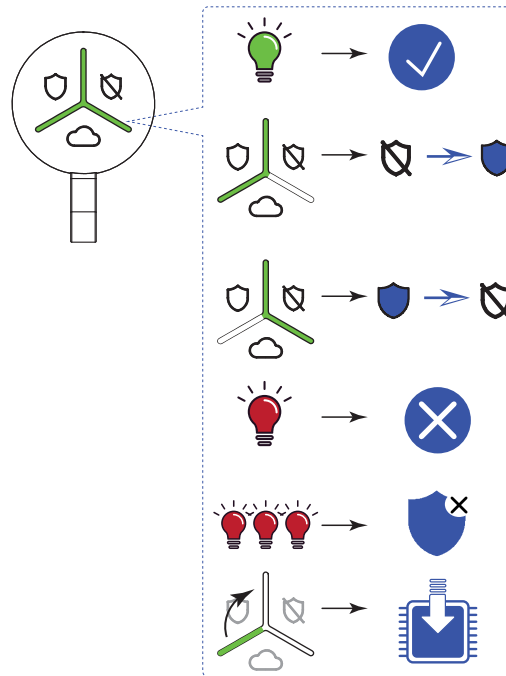
Warranty for U-Prox devices (except batteries) is valid for two years after the purchase date.

If the device operates incorrectly, please contact support@u-prox.systems at first, maybe it can be solved remotely.

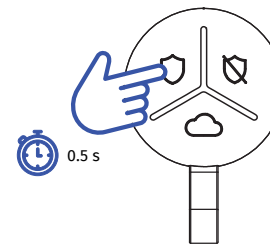
EN REGISTRATION



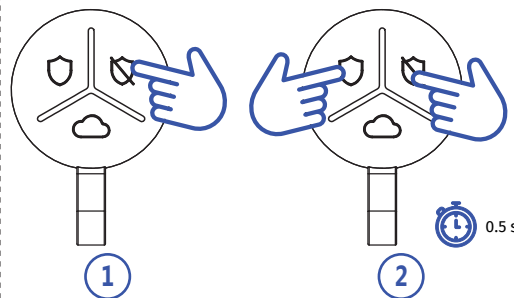
EN INDICATION



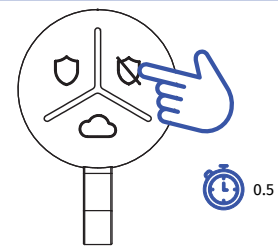
EN ARM



EN STAY ARM / NIGHT MODE



EN DISARM



EN SOFT KEY

